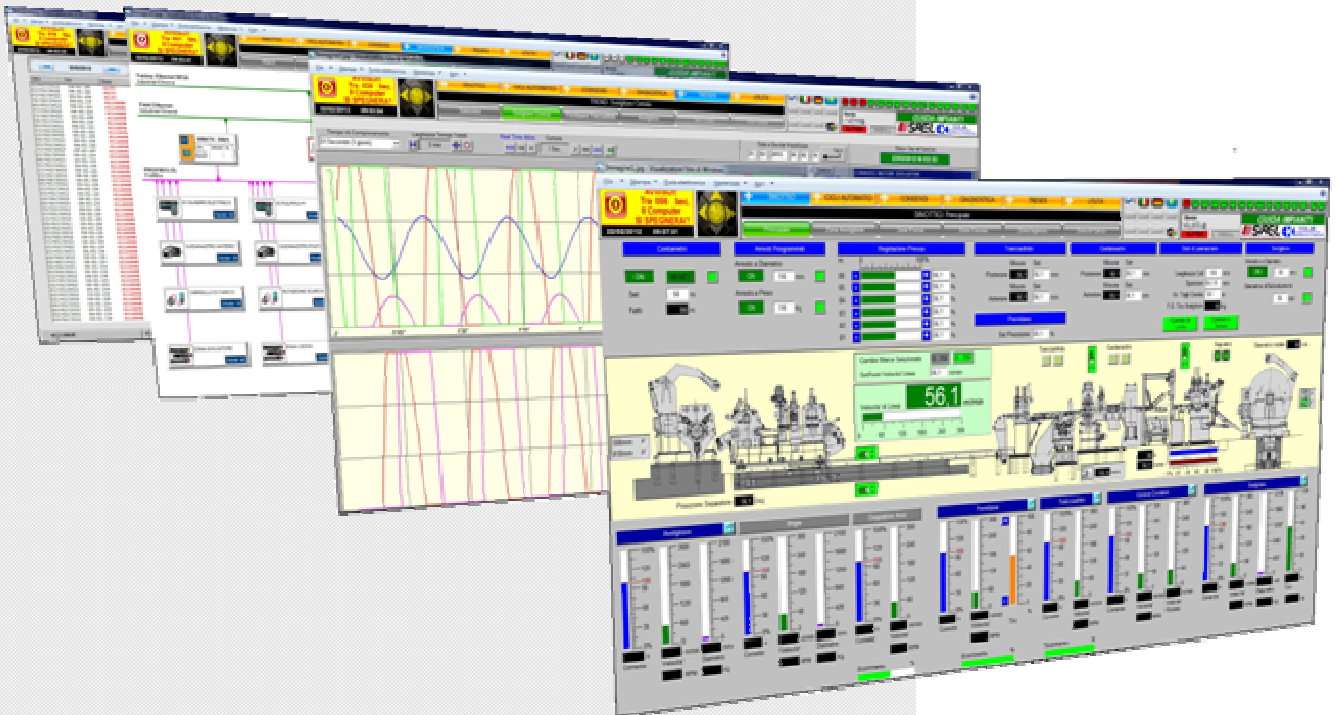


SCALINK®



SCALINK

SCADA Software (Supervision Control and Data Acquisition) developed by Coelme s.r.l. for plant supervision.

It interfaces with all common PLCs (Siemens, ABB, GE, ...) and includes up to 5 light-clients to connect to the server PC.

Created in 1996, it has been developed over the years to be always at the forefront while maintaining the solidity and stability acquired.

It has found application in the iron and steel, naval, petrochemical, paper and energy fields.

Its flexibility also allowed to reach the service sector with the additional FRONTWEB module.

Features:

- Modular approach
- Multiplicity of data sources
- Scalability
- Customer customization
- Future portability

 **Coelme**®
POWER & AUTOMATION SYSTEMS

ENGINEERING ●

SUPPLIES ●

COMMISSIONING ●

INSTALLATION ●

SERVICE ●

SCADA SUITE ●

RESEARCH AND DEVELOPMENT ●

Features	Development & Run time Server	Run Time Server	Light Client	Viewer Client
Maximum Monitor number	6	6	1	1
Maximum Light Client number	5	5		
Unlimited signals number	●	●	●	●
Maximum alarms / day (configurable)	20000	20000	20000	20000
Web server	****	****		
Excel/Access support	●	●		
Email notifications	●	●		
SMS notifications*	●	●		
Data Logging	●	●		
FTP Client	●	●		
Multilanguage support	●	●	●	●
User Management	●	●	●	●
Edit graphic pages	●			
Send commands	●	●	●	
License Type	USB KEY	USB KEY	●	Free (time limited)
Data redundancy**	●	●		
Communication redundancy***	●	●		
Windows 32 bit	●	●	●	●
Windows 64 bit	●	●	●	●
* SMS notifications ** Data redundancy ***Communication redundancy	GSM modem not included in the supply Second license needed Second license needed require an automatic line communication switch (TCP serial switch) or manual (selector switch). In case of automatic switching, there are no interruptions in the acquisition.			
**** FRONTWEB Additional license				



- ENGINEERING ●
- SUPPLIES ●
- COMMISSIONING ●
- INSTALLATION ●
- SERVICE ●
- SCADA SUITE ●
- RESEARCH AND DEVELOPMENT ●