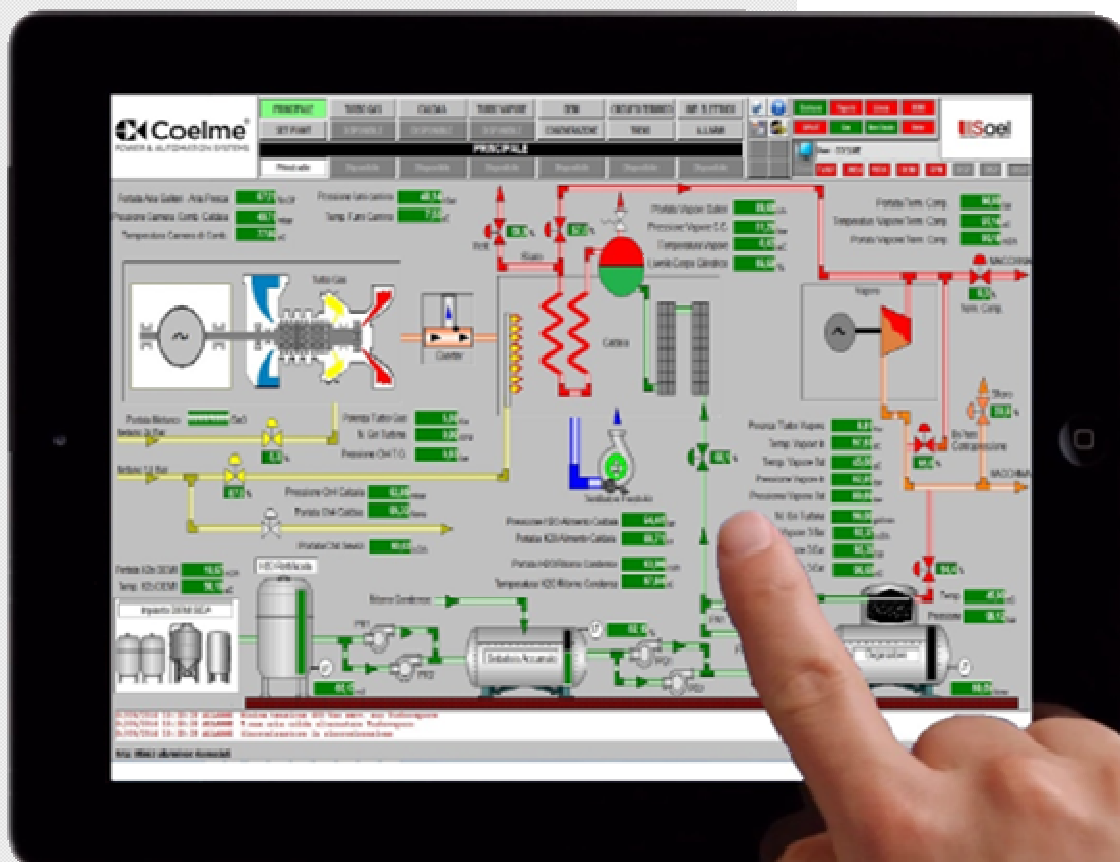


# FRONTWEB®



## FRONTWEB

### Web server module

For view and interact with SCALINK supervisory system from anywhere, with any device with an internet connection.

It is possible to add FRONTWEB to an existing SCALINK.

### Main features:

- Real-time and historical data web presentation
- Allow sending data and commands to server
- Anonymous or authenticated web access
- Compatible with all common browsers (Firefox, Chrome, Edge, Safari...)
- Smartphone, tablet and personal computer support

**Coelme**<sup>®</sup>  
POWER & AUTOMATION SYSTEMS

- ENGINEERING ●
- SUPPLIES ●
- COMMISSIONING ●
- INSTALLATION ●
- SERVICE ●
- SCADA SUITE ●
- RESEARCH AND DEVELOPMENT ●

Features	2.0 Version
Number of users connected simultaneously virtually unlimited	●
User authentication: None - Local - Identity Provider (Google, Facebook ..)	●
Custom homepages for users	●
Historical trends presentation	●
Extended graphs support(X, Y not limited to time scale)	●
Real-time alarms	●
Historical alarms	●
Data export *	●
Remote SCALINK server command	●
Multilanguage support	●
SVG encoding (Scalable Vector Graphics)	
Windows 7 or later	●
Windows 2008 R2 or later	●
* On shared folder/ FTP area	



- ENGINEERING ●
- SUPPLIES ●
- COMMISSIONING ●
- INSTALLATION ●
- SERVICE ●
- SCADA SUITE ●
- RESEARCH AND DEVELOPMENT ●